

**SPECIFICATIONS:**

- FREQUENCY: 0.5 GHz TO 18 GHz
- INSERTION LOSS: REFLECTIVE: 2.5db  
ABSORPTIVE: 3.5db
- ISOLATION: 0.5 GHz TO 2 GHz: 60db  
2 GHz TO 18 GHz: 70db
- VSWR: REFLECTIVE IN/OUT: 2.0:1  
ABSORPTIVE IN/OUT: 2.0:1  
ABSORPTIVE OUT/OFF: 2.0:1
- SPEED: RISE: 10ns TYPICAL, 15ns MAX.  
FALL: 10ns TYPICAL, 15ns MAX.  
DELAY ON: 75ns TYPICAL, 100ns MAX.  
DELAY OFF: 75ns TYPICAL, 100ns MAX.
- POWER INPUT: (CW)+20dBm (STANDARD), +10 dBm (HIGH SPEED)
- SURVIVAL POWER: 1 WATT CW, 10 WATTS PEAK 1 usec
- CONTROL: TTL LOGIC "0"= J1-J2 ON "1"= J1-J3 ON
- POWER SUPPLY: +5V @ 100 mA MAX.  
-5V @ 75mA MAX.(REFLECTIVE)  
100mA MAX.(ABSORPTIVE/NON-REFLECTIVE)
- CONNECTORS:  
RF: REMOVABLE SMA FEMALE  
CONTROL: SOLDER PIN
- SIZE: 1.10" (L) x 0.85" (W) x 0.38" (H)
- WEIGHT: 0.75 oz.

**OPTIONS:**

SINGLE CONTROL WITH SOLDER PIN STANDARD

- IND-SP INDEPENDANT CONTROL WITH SOLDER PIN (LOGIC "0" = ON "1" = OFF)
- SMC SINGLE CONTROL WITH SMC MALE
- IND-SMC INDEPENDANT CONTROL WITH SMC MALE (LOGIC "0" = ON "1" = OFF)
- 10M18 10 MHZ TO 18 GHZ (INSERTION LOSS INCREASES BY 1.5db AT 10 MHZ AND 0.5db AT 18 GHZ)
- 100M18 100 MHZ TO 18 GHZ (INSERTION LOSS INCREASES BY 1.5db AT 100 MHZ AND 0.5db AT 18 GHZ)
- 118 1 GHZ TO 18 GHZ (NO CHANGE IN INSERTION LOSS)
- 218 2 GHZ TO 18 GHZ (NO CHANGE IN INSERTION LOSS)
- 412 4 GHZ TO 12.4 GHZ (NO CHANGE IN INSERTION LOSS)
- 618 6 GHZ TO 18 GHZ (NO CHANGE IN INSERTION LOSS)
- 1218 12 GHZ TO 18 GHZ (NO CHANGE IN INSERTION LOSS)
- 100M20 100 MHZ TO 20 GHZ (INSERTION LOSS INCREASES BY 1.5db AT 100 MHZ AND 1.0db AT 20 GHZ)
- 220 2 GHZ TO 20 GHZ (INSERTION LOSS INCREASES BY 1.0db AT 20 GHZ)
- 1020 10 GHZ TO 20 GHZ (INSERTION LOSS INCREASES BY 1.0db AT 20 GHZ)
- B01 -12V POWER SUPPLIES
- B02 -15V POWER SUPPLIES
- B03 REVERSE LOGIC "1"=ON "0"=OFF
- B04 DRIVERLESS, CURRENT CONTROLLED
- B05 HIGH SPEED, TURNON/TURNOFF 20 nsec MAXIMUM WHEN APPLICABLE OR OPTION HS (NOT AVAILABLE WITH SMC CONTROL)
- B06 HIGH POWER - SPECIFY CW POWER, PEAK POWER, PULSE WIDTH, DUTY CYCLE, RF FREQUENCY AND BANDWIDTH
- B07 CUSTOM DESIGNED PRODUCT- SPECIFY INITIALS OF CUSTOMER
- B08 LOW VIDEO TRANSIENTS - SPECIFY VIDEO BANDWIDTH
- B09 LOW INSERTION LOSS VERSION
- B10 HIGHER ISOLATION VERSION

M/N=MODEL NUMBER  
O/N=OPTION NUMBER  
S/N=SERIAL NUMBER  
P/N=PART NUMBER

**ENVIRONMENTAL RATINGS:**

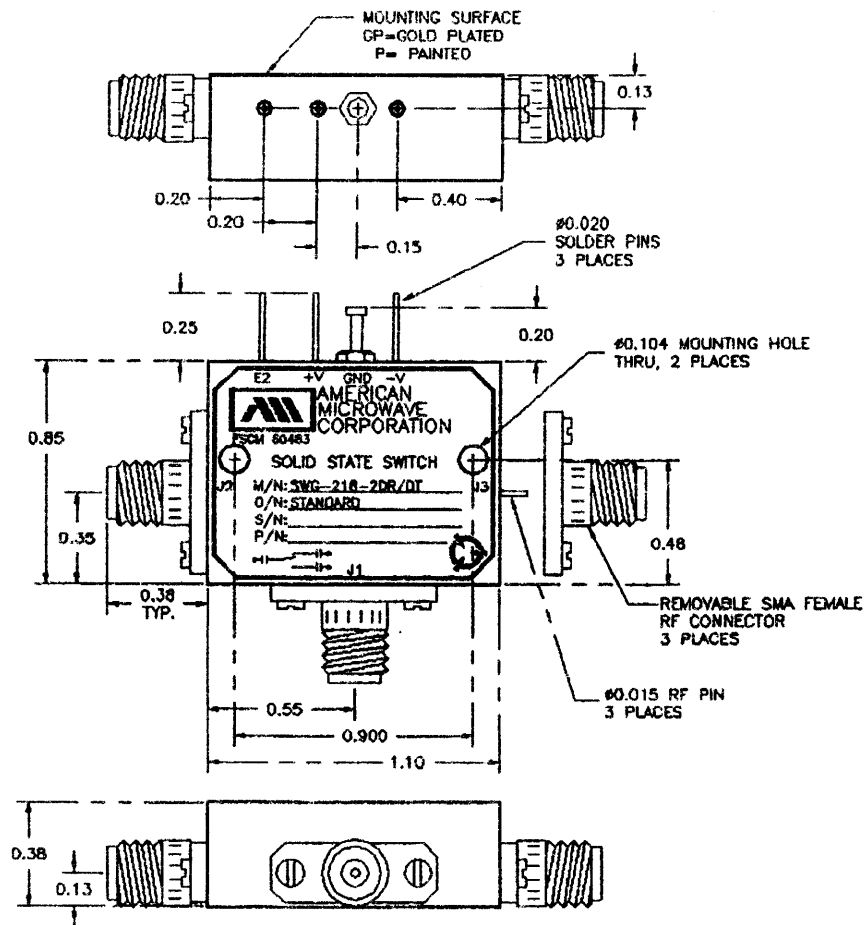
- TEMPERATURE: -55°C TO +85°C (OPERATING)  
-65°C TO +125°C (STORAGE)
- HUMIDITY: MIL-STD-202F, METHOD 103B COND. B
- SHOCK: MIL-STD-202F, METHOD 213B COND. B
- VIBRATION: MIL-STD-202F, METHOD 204D COND. B
- ALTITUDE: MIL-STD-202F, METHOD 105C COND. B
- TEMPERATURE CYCLE: MIL-STD-202F, METHOD 107D COND. A

NOTE: THE ABOVE SPECIFICATIONS ARE SUBJECT TO CHANGE OR REVISION

ALL DIMENSIONS ARE IN INCHES  
TOLERANCES:

X.XX ±0.020  
X.XXX ±0.010

REVISIONS				
ZONE	REV.	DESCRIPTION	DATE	APPROVED
		ORIGINAL RELEASE	1/31/99	



NOTE:

- DR=WITH DRIVER, REFLECTIVE
- DT=WITH DRIVER, NON-REFLECTIVE/ABSORPTIVE

PART NO.		AMERICAN MICROWAVE CORPORATION FREDERICK, MARYLAND		
APPROVALS	DATE	TITLE		
DRAWN: WSP CHECKED: [Signature] ISSUED: [Signature]	1/31/99 2/10/99 2/9/99	OUTLINE DRAWING SWG-218-2DR/DT-STANDARD REFLECTIVE OR NON-REFLECTIVE/ABSORPTIVE SOLID STATE SWITCH		
SIZE	FSCM NO.	DWG NO.	REV.	
A	60483	100-4715-1		
SCALE		SHEET 1 of 1		